



For further information on how HRS Services can help you, please fill in your details below. Alternatively contact us using one of the following:

**Tel** 0800 030 4391  
**E-mail** info@hrsservices.co.uk  
**Web** www.hrsservices.co.uk

I am interested in: (please tick as appropriate)

- Safety
- Structural Inspection & Material
- Rail Work
- Bridge Works
- Telecoms & Mast Structural Inspection
- Thermographic Surveys
- Power Stations
- Other (please specify)



Name \_\_\_\_\_

Job Title \_\_\_\_\_

Company Name \_\_\_\_\_

Address \_\_\_\_\_

\_\_\_\_\_

\_\_\_\_\_ Post Code \_\_\_\_\_

Tel \_\_\_\_\_

Fax \_\_\_\_\_

E-mail Address \_\_\_\_\_

# Case Studies

and contracts completed

## Case Study 1

The potential delamination of panels on a jet engine test facility caused a real headache for Rolls-Royce and a specialist NDT company. Scaffold or towers could not be used as the risk of damaging the structure itself could not be taken.

### Solution 1

HRS supplied experienced rope access supervisors with the relevant ASNT qualifications. The contract went well and follow up surveys are due to be carried out every six months as there is an ongoing risk of panel delamination, which can only be offset by regular checks taking place.

## Case Study 2

A client had a requirement to undertake a visual inspection/survey and various investigation and tests to a number of occupied high-rise tower blocks. The purpose of the work was to produce a bill of quantities for a programme of remedial repairs. Conventional access (scaffold cradles) was both intrusive and prohibitively expensive.

### Solution 2

HRS were commissioned to undertake the survey and testing works by using industrial rope access techniques. The rapid installation and removal of such systems allows for a minimal period to be spent on site with little impact on other site users/residents. This allows costs to be kept down to a minimum whilst allowing for a comprehensive survey of the external elevations.

A full schedule of faults was produced from the data gathered from site, backed up by digital photographs and comprehensive elevation drawings showing the location of all defects.

Babtie

Sandwell MBC

Leeds City Council

Manchester City Council

Pitchmastic

Mott MacDonald

Amey Mouchel

Parkman

Owen Williams

Please visit our website:  
[www.hrsservices.co.uk](http://www.hrsservices.co.uk)  
 for more detailed  
 information about  
 individual case studies.



All solutions provided by HRS are supported by ISO 9001:2000, certified by BSI and full insurance cover, including PI.  
**HRS provides safe, cost effective, high quality solutions . . . NOT cheap answers!!**

Safety Management

Rail Work  
 Structural Inspection  
 Bridge Works

HRS Services Ltd  
 Assessment  
 Rope Access,  
 Building Inspection  
 & Maintenance

Investigation & Material  
 Testing



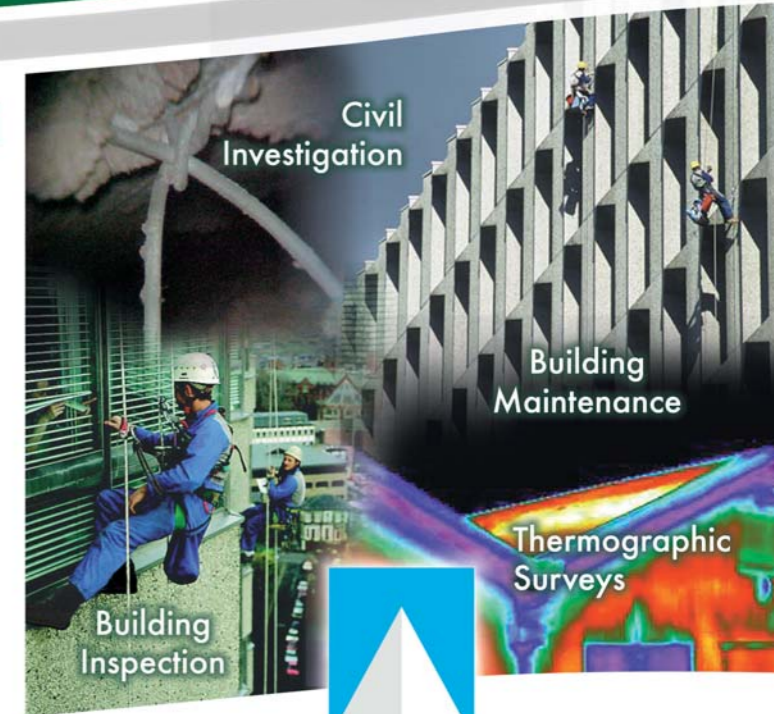
HRS Services Limited

The Maltings • 81 Burton Road • Sheffield S3 8BZ • England

Tel 0800 030 4391

E-mail info@hrsservices.co.uk

[www.hrsservices.co.uk](http://www.hrsservices.co.uk)



h r s  
 SERVICES  
 LIMITED





# Rope Access, Building Inspection & Maintenance

## Structural Inspection, Examination, Assessment

HRS provide a level of service that you can trust. From office through to site, the high level of customer service is based on the expertise and hard work from qualified staff and trained on-site teams who have the skills and resources to complete contracts safely and on time in the following areas:

- Structural Inspection, Investigation and Material Testing
- Rail Work
- Bridge Works
- Telecoms and Mast Structural Inspection
- Thermographic Surveys

## Safety

Safety is our No. 1 priority, with all contracts being reviewed for working methods, hazards and risks - ensuring that suitable procedures, equipment & resources are employed.

- All HRS staff and site operatives undertake regular safety training courses
- All HRS equipment is regularly inspected, tested and audited.

In addition to an in-house NEBOSH qualified Safety Officer, HRS use the services of an independent Safety Consultant who makes un-announced site visits and provides clients with up-to-date Safety Reports. HRS has been recording accident statistics since 1989 with an exceptional safety record. Copies of Accident Statistics, Safety Reports, Training and Equipment Audits are available on request.



## Structural Inspection, Investigation and Material Testing

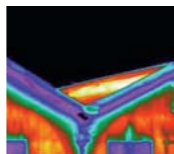
A priority for HRS is to discuss with clients well before work commences to ascertain why the work is being carried out, what information is required and in what format. The aim is to ensure that the final report is not only accurate, but concise and useful for its

intended purpose. When HRS first established itself, carrying out surveys on high rise buildings, it offered clients the benefits of computerised data input and reporting. Over the years these benefits have been built upon, to provide clients with a comprehensive inspection service for all types of structures and associated materials, including brickwork, concrete, mortar, steelwork, etc.

Investigations by exposing cavities, nibs or using borescopes, cover meters, or wall tie detectors are supported with data and reports built up using digital software, allowing clients to easily review and edit draft reports prior to final reports being submitted.

## Thermographic Surveys

Thermographic Surveys are also carried out on many facilities. The experience and knowledge gained by HRS of building design, detailing and construction aids correct evaluation of data. Trained staff carry out surveys to BS EN 13187:1999



## Rail Infrastructure Works

Network Rail and their approved contractors rely on HRS to complete examination and maintenance to rock cuttings, retaining walls, high level stations and bridges with minimal disruption to the rail network and within tight possession times. Modern access methods can frequently reduce the need for scaffolding and access plant thereby reducing the need and time for possessions. With 20 years experience working within the rail industry, HRS provides a level of services that is difficult to match. HRS is Link-up approved with all works covered by our quality system to ISO 9001:2000 as certified by BSI. In addition to our bridge examination and dimensional works HRS offers infrastructure maintenance works such as devegetation and netting of rock cuttings and bridges and the design and installation of fall arrest systems for bridges, stations and lighting masts. HRS has experience across the Network Rail regions as well as within the London Underground system.



## Bridge Examinations and Dimensional Works

HRS has 20 years experience working for examinations and Network Rail approved assessment consultants together with public bodies across the country. Dimensions for assessment can also be collated. Aside from our experience on many of the country's flagship structures such as the Forth, Albert and Tay Rail, Humber suspension and QEII cable stayed bridges HRS has examined hundreds of everyday bridges, culverts and retaining walls across the road and rail network. HRS has examiners trained to Network Rails Units 9 & 10 (SCMI) competencies and currently in the process of assessment to Unit 5. All examinations and dimensioning works is covered by both our quality system to ISO 9001:2000 as certified by BSI and our PI cover.

## Telecom and Mast Structural Inspection

By using HRS you can enjoy the benefit of swift and safe access techniques for inspections. Fall protection systems can be designed and installed to facilitate future safe access.



## Fall Protection

From design through to installation HRS can work with property managers, surveyors and architects to design Uniline and bespoke fall protection systems to ensure that you are seen to be operating under the latest standards and all persons are protected whilst exposed to any potential falls from height.



BUSINESS REPLY SERVICE  
LICENCE No. NEA4660

HRS Services Limited  
The Maltings  
81 Burton Road  
Sheffield  
S3 7ZZ